

# COVID-19 & Back to School Update

Tuesday, August 10, 2021



Pathway to the Future  
Since 1855

# COVID-19 Safety Mitigation Measures

- ★ Stay Home When Sick
- ★ Universal Masking Indoors
- ★ Hand Hygiene
- ★ Ventilation Upgrades
- ★ COVID-19 Testing



# Stay Home When Sick

## Signs/Symptoms of COVID -19



### Signs/Symptoms in past 3 days:

- Fever or chills
- Cough
- Loss of taste or smell
- Shortness of breath or difficulty breathing



Fever or Chills



Cough



Shortness of Breath or  
Difficulty Breathing



Sore Throat  
\*New or Unexplained



Fatigue  
\*New or Unexplained



Muscle or Body Aches  
\*New or Unexplained



Headache  
\*New or Unexplained



Loss of Taste or Smell

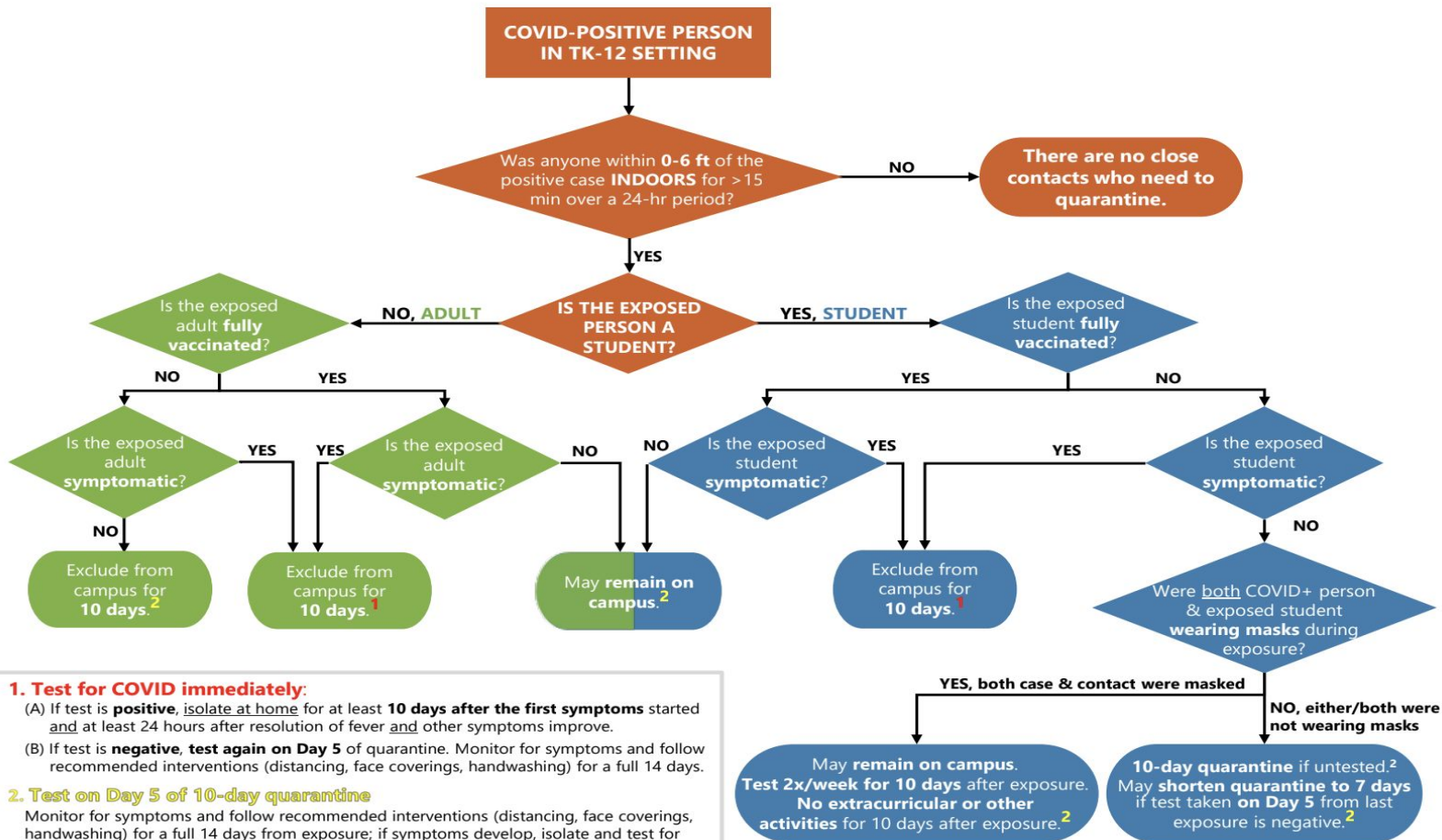


Nausea, Diarrhea, or  
Vomiting  
\*New or Unexplained

### New or not explained by another reason:

- Fatigue
- Muscle or body aches
- Headache
- Sore throat
- Nausea, vomiting or diarrhea
- Runny nose or congestion *IF* combined with other symptoms

# 2021-2022 Quarantine Requirements for TK-12 School Settings



## 1. Test for COVID immediately:

- (A) If test is **positive**, isolate at home for at least **10 days after the first symptoms** started and at least 24 hours after resolution of fever and other symptoms improve.
- (B) If test is **negative**, **test again on Day 5** of quarantine. Monitor for symptoms and follow recommended interventions (distancing, face coverings, handwashing) for a full 14 days.

## 2. Test on Day 5 of 10-day quarantine

Monitor for symptoms and follow recommended interventions (distancing, face coverings, handwashing) for a full 14 days from exposure; if symptoms develop, isolate and test for COVID immediately.

# MASK GUIDANCE

## SHARED OFFICE

### IN A SHARED OFFICE

- In a shared office, both unvaccinated and vaccinated staff must wear a face covering at all times, per the [8/2/21 Health Order](#).

*Previous to [this latest order](#), masks were optional for vaccinated staff in this context.*

## SINGLE OFFICE/ROOM WITH A DOOR

### IN AN OFFICE/ROOM WITH A DOOR

- A face covering/mask does not need to be worn if a person is working alone, and the door is closed.
- A face covering/mask should be put on if someone approaches or enters the office/room.
- A face covering/mask should be worn when leaving the room and entering common spaces.

## FRONT OFFICE OF A SCHOOL

### IN THE FRONT OFFICE OF A SCHOOL

- A face covering/mask must be worn at all times.

## EMPTY CLASSROOM

### IN AN EMPTY CLASSROOM

- A face covering/mask does not need to be worn if a person is working alone and the door is closed.
- Face coverings/masks should be worn if someone approaches or enters the office/room.
- face coverings/masks should be worn when leaving the room and entering common spaces.

## CLASSROOM WITH STUDENTS

### IN AN OCCUPIED CLASSROOM, WITH STUDENTS

- Face coverings/masks must be worn at all times.

## WHILE EATING

### WHILE EATING OR DRINKING

- Face coverings/masks can be removed but must be put back on immediately when finished.

In addition, according to the 2021-2022 School Guidance:

- Masks are optional outdoors for all in K-12 school settings.
- K-12 students are required to mask indoors, with exemptions per CDPH face mask guidance.
- Adults in K-12 school settings are required to mask when sharing indoor spaces with students.
- Persons exempted from wearing a face-covering due to a medical condition must wear a non-restrictive alternative, such as a face shield with a drape on the bottom edge, as long as their condition permits it.



# Scaling Up COVID-19 Testing

- Partnership with Bay Area Community Health (Every 1st and 3rd Thursday at Sierramont MS)
- COVID-19/SARS-CoV-2 testing funding support from CDPH
- Exploring Weekly COVID Testing Accessibility for staff and students





# COVID-19 Vaccinations Among Santa Clara County Residents Currently Eligible for Vaccination

Santa Clara County  
**PUBLIC HEALTH**

Last updated on August 9, 2021

Residents Ages 12 and Older with at least One Dose

**1,459,158**

Percent of Residents Ages 12 and Older with at least One Dose

**85.1%**

Residents Ages 12 and Older with Completed Vaccination

**1,364,801**

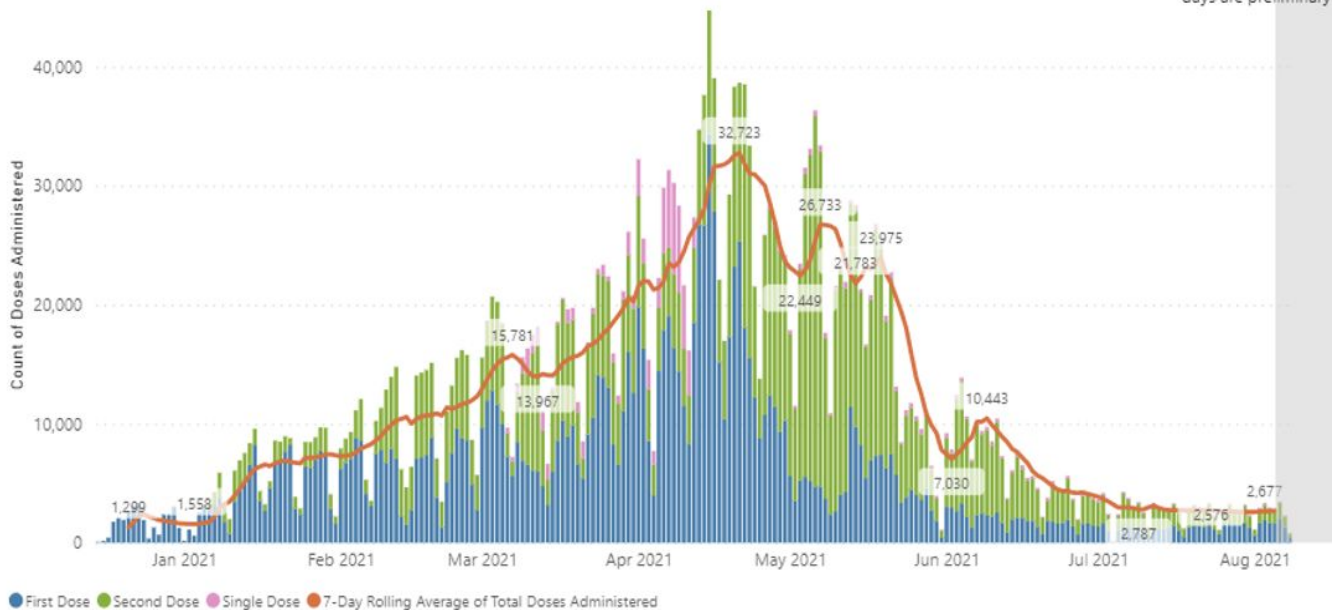
Percent of Residents Ages 12 and Older with Completed Vaccination

**79.6%**

Displaying:

COVID-19 Vaccine Doses Administered Over Time

Values for the most recent 3 days are preliminary





# Stay Safe & Healthy

## Vaccination

- Today - August 10, 2021
- Ages 12+
- 2:30 - 6:30 pm
- Piedmont Middle School
- No appointment necessary



## COVID-19 Testing

- Thursday, August 12, 2021
- 1:00 - 4:00 pm
- Sierramont Middle School
- Drive-Up
- No appointment Necessary
- Every 1st and 3rd Thursday



Pathway to the Future  
Since 1855



# Independent Study

Coordinator - Maricela Krickovic

- Approximately 250 students (TK - grade 8)
- Written Agreements currently under review
- Parent Orientation with Edgenuity forthcoming



Pathway to the Future  
Since 1855

# Thank you!



Pathway to the Future  
Since 1855