

**ADDENDUM 01**  
**BID No. B-01-2020-21**

**SIERRAMONT MIDDLE SCHOOL**  
**ORNAMENTAL FENCES AND GATES PROJECT**

Berryessa Union School District

1 | Page

**Sierramont Middle School**  
**Ornamental Fences and Gates Project**

**Bid No. B-01-2020-21**

**October 19, 2020**

**BERRYESSA UNION SCHOOL DISTRICT**  
**SAN JOSE, CALIFORNIA**

This Addendum forms a part of the Contract Documents. Bidders must acknowledge receipt of this Addendum in the space provided on the Bid Form. Failure to do so may subject the Bidder to disqualification.

**DRAWING CLARIFICATIONS:**

**Item 1: Sheet A-1.1**

Added general note 6 to read "Do NOT install concrete mow curb".

**Item 2: Sheet A-1.1**

Added general note 7 to read "All double gates to include center fixed post".

**Item 3: Sheet A-1.1**

Removed "Photo 7 – see next sheet" call out.

**Item 4: Sheet A-1.1**

Added call out to read "7'- 0" +/- opening with two (2) 3'- 6" wide double gates. Include panic hardware and fixed post between gates.  
6' high ornamental fence to terminate at end of building corner."

**Item 5: Sheet A-1.1**

Removed portion of fence so that fence terminates at end of building corner.

**Item 6: Sheet A-1.1**

Revised gate opening and sizes.

**Item 7: Sheet A-1.1**

Revised gate swing to swing towards parking lot (away from building).

**Item 8: Sheet A-1.1**

Added note "Install fence line 6" away from back of sidewalks.

**Item 9: Photo References Sheet (sheet 2 of 3)**

Removed Photo #7 from Photo References sheet 2 of 3.

**Item 10: Photo References Sheet (sheet 2 of 3)**

Revised second Photo #7 reference to Photo #8 to read "Photo 8: Quantity two (2) existing benches to be removed. Remove concrete footings and backfill.

**ADDENDUM 01**  
**BID No. B-01-2020-21**

**SIERRAMONT MIDDLE SCHOOL**  
**ORNAMENTAL FENCES AND GATES PROJECT**

Berryessa Union School District

2 | Page

**Item 11: Details Sheet (sheet 3 of 3)**

Removed "Dac-Detex" from call out on detail 11.

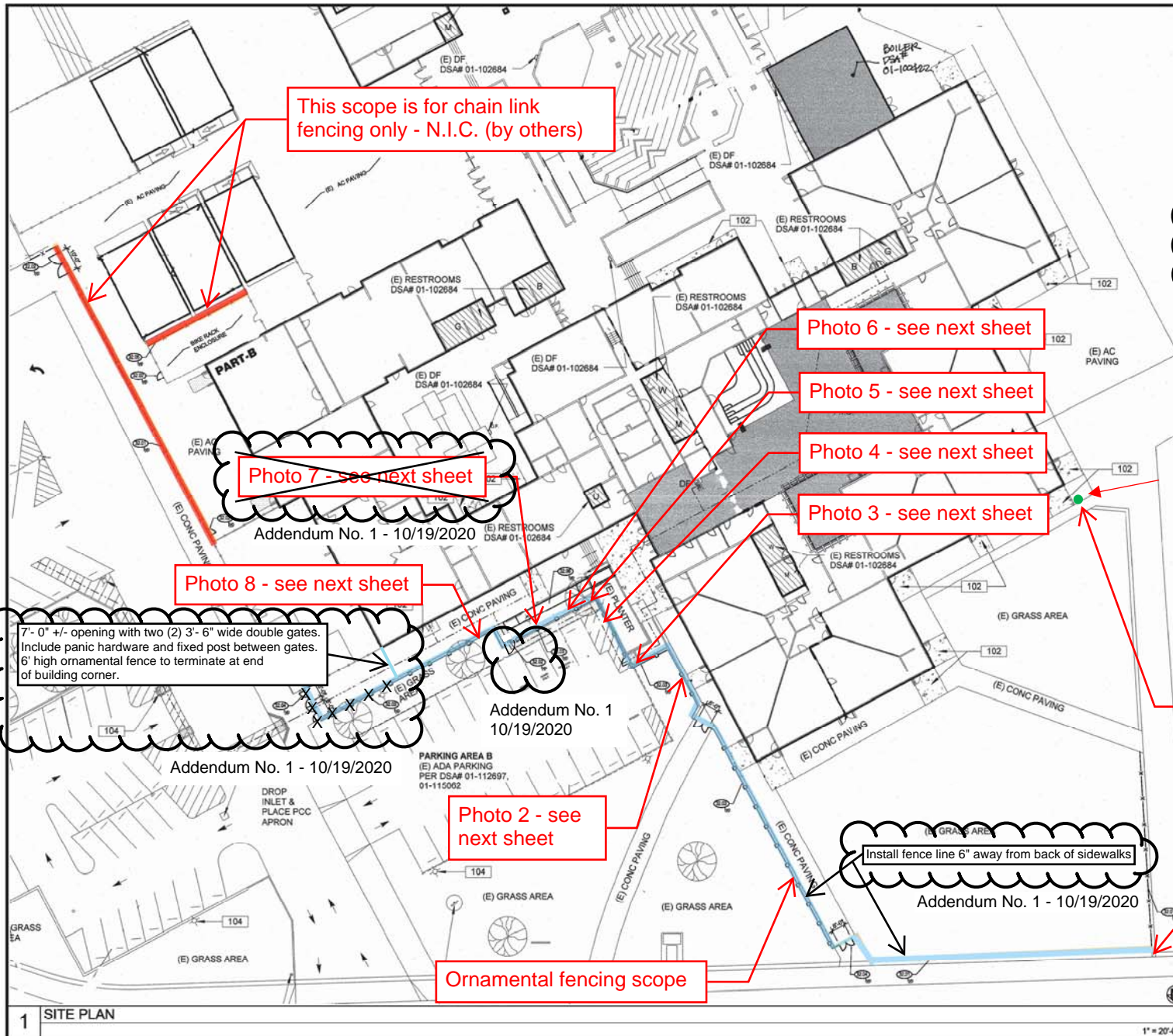
**Item 12: Details Sheet (sheet 3 of 3)**

Added "See General Note #1 on sheet A-1.1 for hardware information" in call out on detail 11.

**Attachments:**

Site Fencing Plans and Details

END OF ADDENDUM 01



# GENERAL NOTES

1. Dimensions are given +/- Contractor to verify all dimensions, quantities, and requirements prior to ordering and installation.
2. Contractor to locate all utilities prior to drilling footings in all areas of work. Adjust footing location to avoid (2) utilities, where occurs.
3. Contractor to submit detailed shop drawings, SPECIFIC TO THIS SITE, for review. Include full layout and location of all posts, gate details, hardware details, specifications for review and approval prior to fabrication.
4. Prior to installation, walk site with District to review layout.
5. All panic hardware to be from Von Duprin AX 900-AL.

6. Do NOT install concrete mow curb.
  7. All double gates to include center fixed post.
- Addendum No. 1 - 10/19/2020

## SITE PLAN KEY NOTES

- 32.01 4'-0" high chain link fence, see detail XA-12.1, typ.
- 32.02 6'-0" high chain link gate, with as identified on plan. See detail XA-12.1.
- 32.03 6'-0" high ornamental fence, see detail XA-12.1, typ.
- 32.04 6'-0" high ornamental gate, with as identified on plan. Refer to XA-12.1.
- 32.05 6'-0" high chain link fence, see detail XA-12.1, typ.
- 32.06 Concrete ramp, (phase 2) Contractor to refer to grading plan and detail XA-12.1.

## SITE PLAN LEGEND

- Ornamental Fence, typ.
- Chain link fence, typ.

(E) Bollard: Cut flush to existing paving. Fill hole with concrete to be finished level with adjacent paving elevation.

Photo 1 - see next sheet

Regulatory Agency Approval



Engineer Seal



Project Title

**SIERRAMONT MIDDLE SCHOOL**  
3155 KIMLEE DRIVE  
SAN JOSE, CA 95132  
**FENCING**

Client

**SERRAVALLE UNION SCHOOL DISTRICT**  
1376 PIEDMONT ROAD  
SAN JOSE, CA 95132

No.

Revisions/Submissions

Date

Author

Checker

Drawing Title

SITE PLAN

Project No.

2008

Date

April 26, 2020

Drawing Number

CD

A-1.1



**BUSD – SIERRAMONT MIDDLE SCHOOL**  
**ORNAMENTAL FENCES AND GATES PROJECT**  
**PHOTO REFERENCES TO SHEET A-1.1**



Photo 1: Temporarily remove knox box as necessary to accommodate for fence installation and reinstall at existing location.



Photo 2: Trim shrub to accommodate for fence installation



Photo 3: Trim shrub to accommodate for fence installation

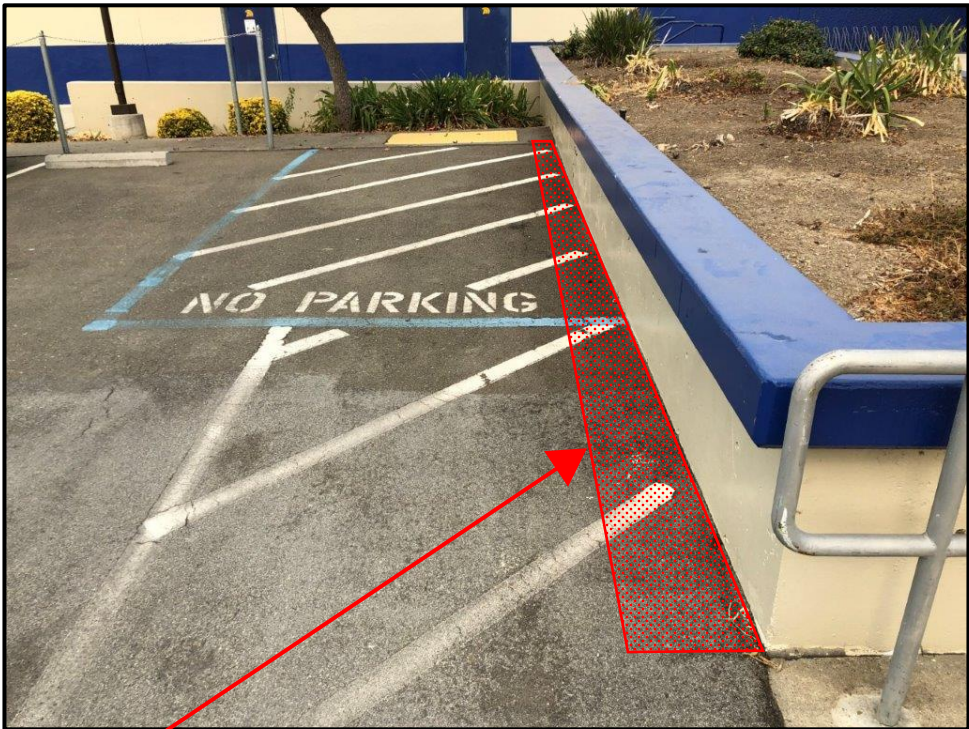


Photo 4: Black out with approved traffic marking paint from planter corner to end of asphalt paving 6" past top edge of seat wall. Do not paint over "NO PARKING" sign. Do not paint vertical planter wall.



Photo 5: Trim shrub to accommodate for fence installation



Photo 6: Relocate existing ADA parking sign and install new pole to be centered between new fence and wheel stop. Remove existing pole, footing, and backfill.

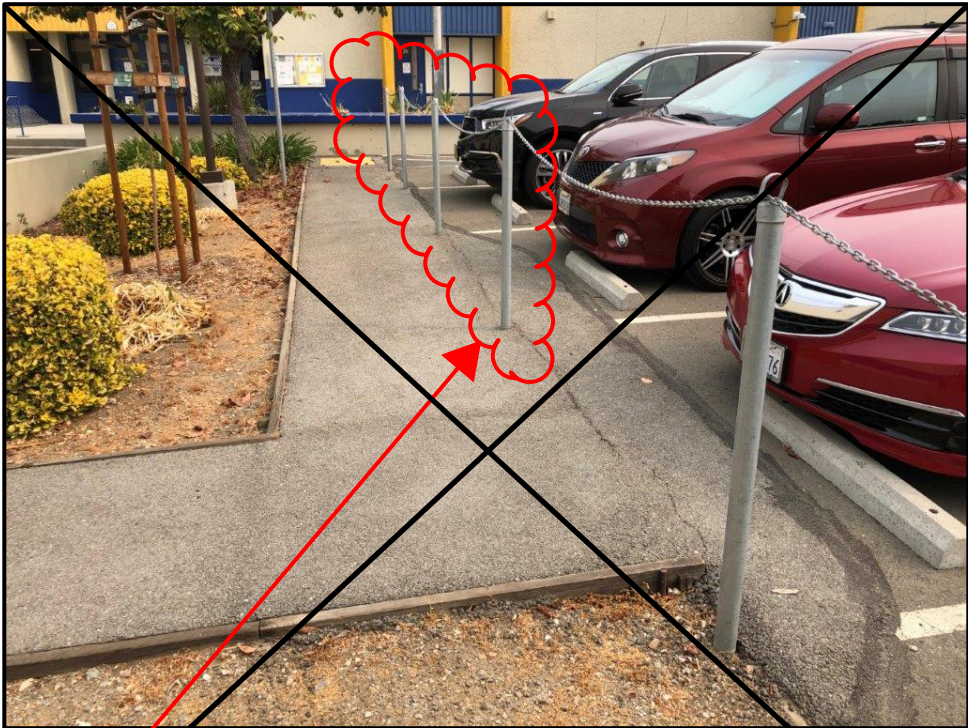


Photo 7: Quantity four (4) existing posts to be cut flush to paving finish level. Fill holes with concrete. Cut chain and weld chain together at existing post located new fence corner.

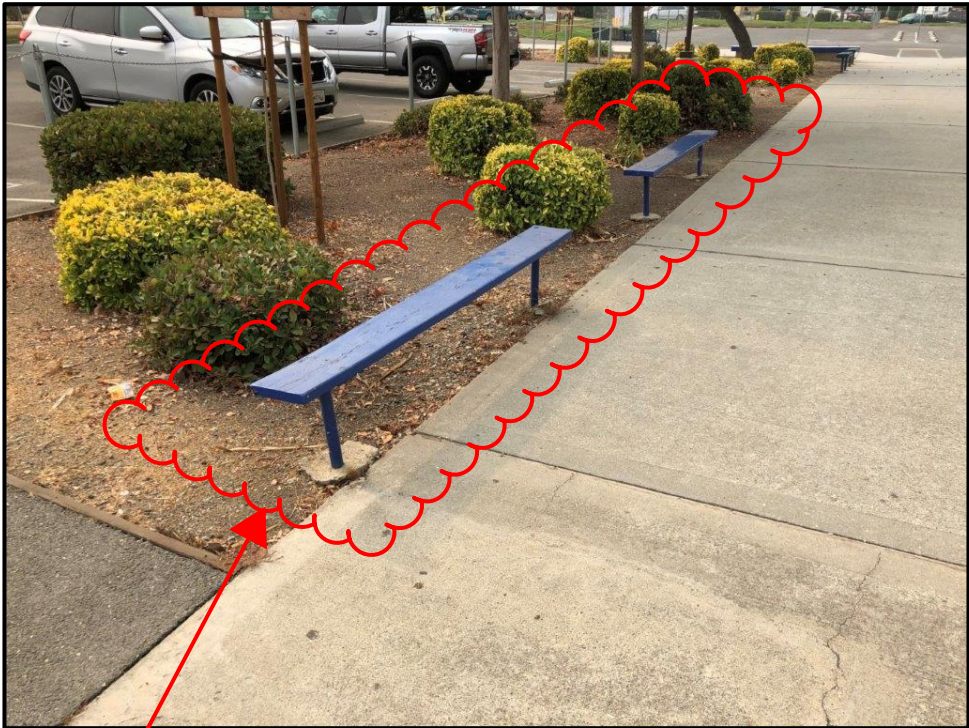


Photo 8: Quantity two (2) existing benches to be removed. Remove concrete footings and backfill.



